



*jordanfishwick*

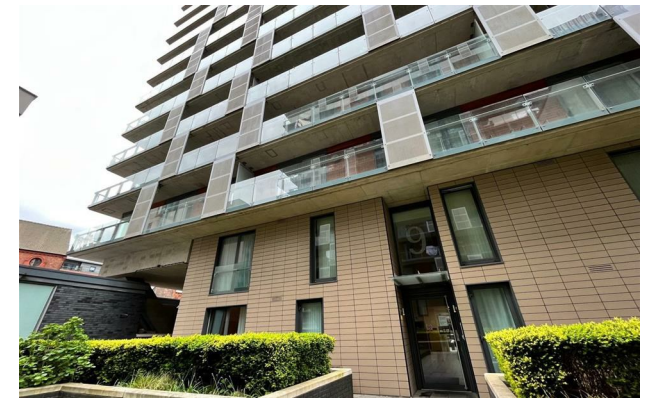
Apt 478 Spectrum Block 9, Blackfriars  
£950 Per Calendar Month





## Spectrum Block 9 Salford M3 7DZ

£950 Per Calendar Month



### The Property

Available Late May. This large one bedroom apartment is located in the Spectrum Development which is a short distance from Deansgate. Fully fitted kitchen with fridge and freezer, dishwasher and oven, the living room has sliding patio door opening to a large corner balcony. The double bedroom has built in wardrobes and there is a luxurious shower suite with tiled and mirrored walls. Furnished. No Parking. Ideal for Professionals & young couples. Tax Band B. EPC Rating B.

\*VIDEO/PHOTO OFFERS NOT ACCEPTED - PLEASE BOOK AN IN PERSON VIEWING\*



- Available Late May
- Large One Bed w/ Balcony
- On site Conceierge
- Furnished
- EPC Rating B
- Council Tax Band B
- Central location
- Close to City Centre & Victoria Station
- No parking



Energy Efficiency Rating		
	Current	Potential
Very energy efficient - lower running costs		
(92 plus) <b>A</b>		
(81-91) <b>B</b>	82	87
(69-80) <b>C</b>		
(55-68) <b>D</b>		
(39-54) <b>E</b>		
(21-38) <b>F</b>		
(1-20) <b>G</b>		
Not energy efficient - higher running costs		
<b>England &amp; Wales</b>	EU Directive 2002/91/EC	





These particulars are believed to be accurate but they are not guaranteed and do not form a contract. Neither Jordan Fishwick nor the vendor or lessor accept any responsibility in respect of these particulars, which are not intended to be statements or representations of fact and any intending purchaser or lessee must satisfy himself by inspection or otherwise as to the correctness of each of the statements contained in these particulars. Any floorplans on this brochure are for illustrative purposes only and are not necessarily to scale.

Offices at: Offices at Chorlton, Didsbury, Disley, Hale, Glossop, Macclesfield, Manchester Deansgate, Manchester Whitworth Street, New Mills, Sale, Wilmslow and Withington